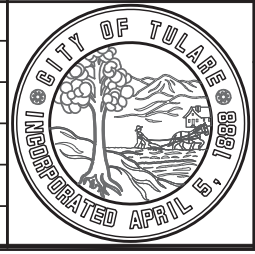


SECTION A-A

NOTES:

1. ALL CELLS IN CONC. BLOCKS SHALL BE FILLED SOLID WITH COARSE GROUT.
2. CORNER BLOCK ENDS AND CENTER WEB SHALL BE CUT TO FORM CONCRETE BOND BEAM.
3. ALL HORIZONTAL AND VERTICAL JOINTS SHALL BE RAKED TO MATCH CENTER SCORED BLOCK.
4. CONC. BLOCK, MORTAR AND COARSE GROUT SHALL CONFORM WITH CBC, LATEST EDITION. SEE DWG. NO. 9120 FOR CONCRETE AND MASONRY MATERIAL REQUIREMENTS.
5. SLAB FLOOR & FOOTING SHALL BE CLASS "B" PORTLAND CEMENT CONCRETE.
6. GROUND TO BE SLOPED 1% AWAY FROM WALLS.
7. LOCATION OF TRASH ENCLOSURE TO BE APPROVED BY THE SOLID WASTE DEPT. OF THE CITY OF TULARE.
8. THIS ENCLOSURE IS FOR STORAGE OF CITY OF TULARE SOLID WASTE CONTAINERS ONLY. IF STORAGE OF GREASE CONTAINERS IS NEEDED, ADD SEPARATE OPTIONAL ENCLOSURE.
9. HINGES SHALL BE ATTACHED TO THE FRONT AND OUTSIDE OF ENCLOSURE WALL, AND OUTSIDE OF CENTER POST.
10. GATES SHALL BE METAL WITH SELF-CLOSING HINGES AND CANE BOLTS/SLEEVES IN OPEN AND CLOSED POSITIONS.
11. HUNG GATES SHALL SWING OPEN TO 180 DEGREES FROM THE CLOSED POSITION AND HAVE A 4" CLEARANCE ABOVE FINISHED PAD OR APRON.
12. ENCLOSURE IS SUBJECT TO FINAL INSPECTION BY THE CITY OF TULARE SOLID WASTE DIVISION AND IS SUBJECT TO RECONSTRUCTION AT OWNER'S EXPENSE IF STANDARDS ARE NOT MET.
13. "NO PARKING" SHALL BE PAINTED AT THE END OF THE CONCRETE APRON IN 12" TALL, RED LETTERING.

REVISIONS	DATE



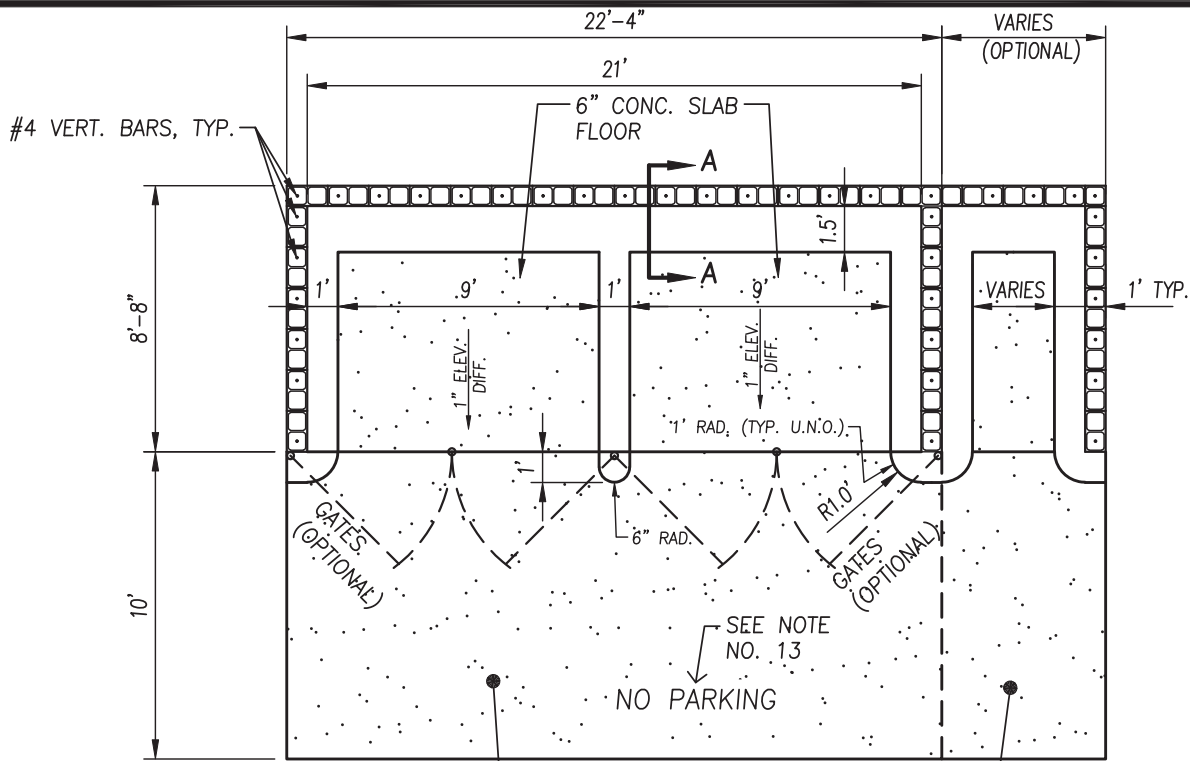
CITY OF TULARE
PUBLIC IMPROVEMENT STANDARD

SINGLE WIDE TRASH ENCLOSURE

DRAWING NO.:
9010

Approved By: _____
Date: 1/1/16 City Engineer

1 OF

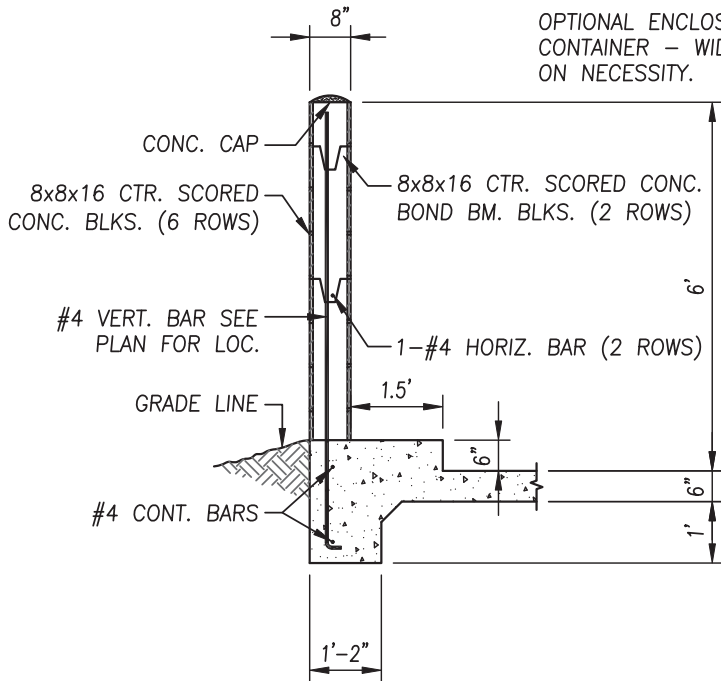


8" CONC. SLAB W/#4 REBAR
AT 12" O.C. EA. WAY

OPTIONAL ENCLOSURE FOR GREASE
CONTAINER - WIDTH VARIES BASED
ON NECESSITY.

NOTES:

1. ALL CELLS IN CONC. BLOCKS SHALL BE FILLED SOLID WITH COARSE GROUT.
2. CORNER BLOCK ENDS AND CENTER WEB SHALL BE CUT TO FORM CONCRETE BOND BEAM.
3. ALL HORIZONTAL AND VERTICAL JOINTS SHALL BE RAKED TO MATCH CENTER SCORED BLOCK.
4. CONC. BLOCK, MORTAR AND COARSE GROUT SHALL CONFORM WITH CBC, LATEST EDITION. SEE DWG. NO. 9120 FOR CONCRETE AND MASONRY MATERIAL REQUIREMENTS.
5. SLAB FLOOR & FOOTING SHALL BE CLASS "B" PORTLAND CEMENT CONCRETE.
6. GROUND TO BE SLOPED 1% AWAY FROM WALLS.
7. LOCATION OF TRASH ENCLOSURE TO BE APPROVED BY THE SOLID WASTE DEPT. OF THE CITY OF TULARE.
8. THIS ENCLOSURE IS FOR STORAGE OF CITY OF TULARE SOLID WASTE CONTAINERS ONLY. IF STORAGE OF GREASE CONTAINERS IS NEEDED, ADD SEPARATE OPTIONAL ENCLOSURE.
9. HINGES SHALL BE ATTACHED TO THE FRONT AND OUTSIDE OF ENCLOSURE WALL, AND OUTSIDE OF CENTER POST.
10. GATES SHALL BE METAL WITH SELF-CLOSING HINGES AND CANE BOLTS/SLEEVES IN OPEN AND CLOSED POSITIONS.
11. HUNG GATES SHALL SWING OPEN TO 180 DEGREES FROM THE CLOSED POSITION AND HAVE A 4" CLEARANCE ABOVE FINISHED PAD OR APRON.
12. ENCLOSURE IS SUBJECT TO FINAL INSPECTION BY THE CITY OF TULARE SOLID WASTE DIVISION AND IS SUBJECT TO RECONSTRUCTION AT OWNER'S EXPENSE IF STANDARDS ARE NOT MET.
13. "NO PARKING" SHALL BE PAINTED AT THE END OF THE CONCRETE APRON IN 12" TALL, RED LETTERING.



SECTION A-A

REVISIONS	DATE



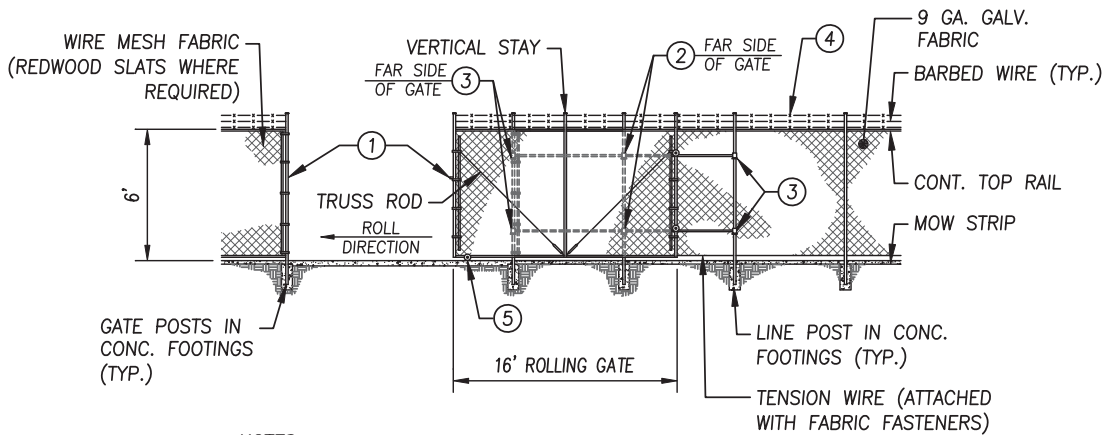
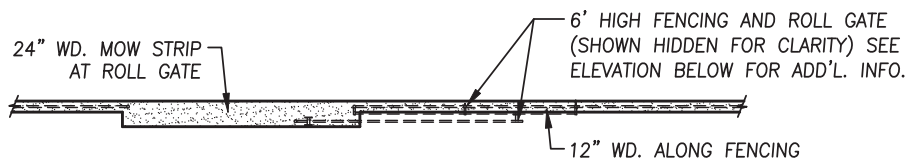
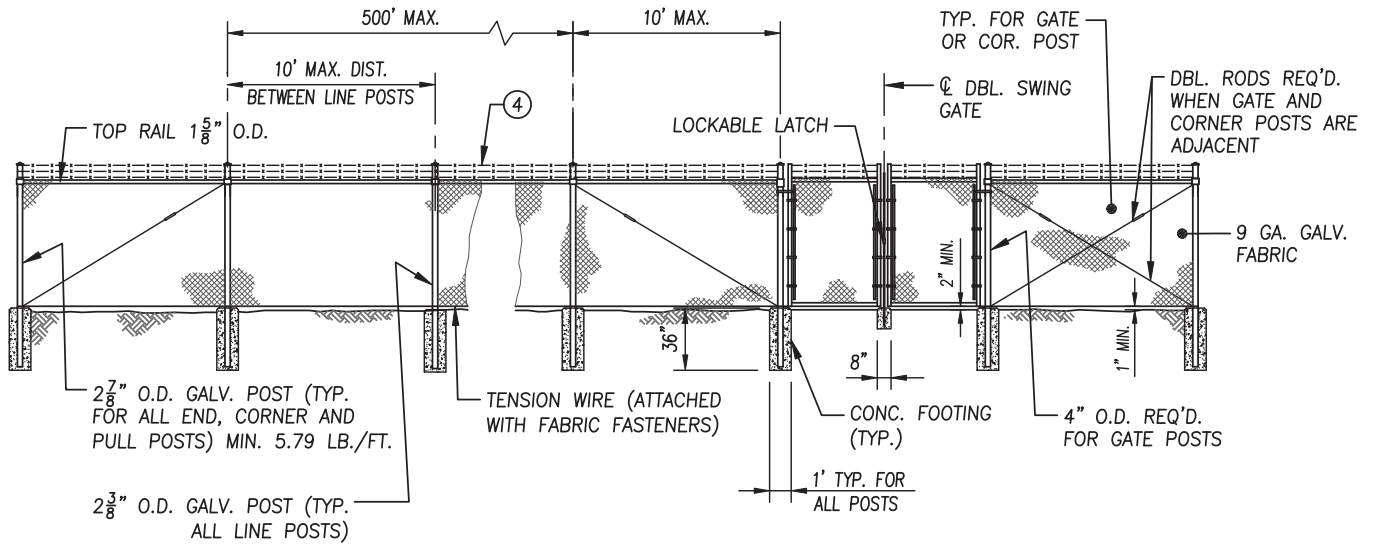
CITY OF TULARE
PUBLIC IMPROVEMENT STANDARD

DOUBLE WIDE TRASH ENCLOSURE

DRAWING NO.:
9015

Approved By: _____
Date: 1/1/16 City Engineer

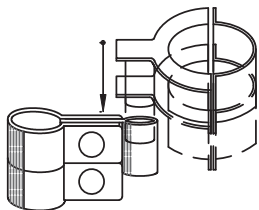
1 OF



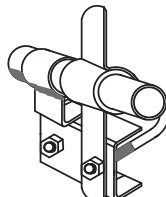
NOTES:

1. GATE FRAME AND ROLLING GATE PIPE TRACK SHALL BE 1 7/8" PIPE.
2. VERTICAL STAY SHALL BE 1 5/8" PIPE.
3. USE 3/8" STEEL TRUSS RODS WITH TURN BUCKLES.
4. THE CITY ENGINEER MAY REQUIRED BARBED WIRE.
5. REFER TO CITY OF TULARE TECHNICAL SPECIFICATIONS.

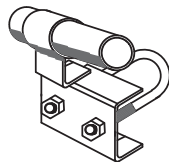
① LATCH



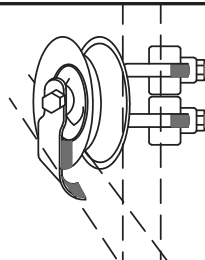
③ END TRACK BRACKET



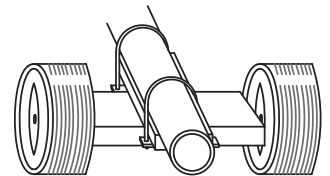
② LINE TRACK BRACKET



④ REAR WHEEL (PRESSED STEEL OR MALLEABLE)



⑤ DOUBLE WHEEL



REVISIONS

REVISIONS	DATE



CITY OF TULARE
PUBLIC IMPROVEMENT STANDARD
CHAINLINK FENCE AND GATES

Approved By: _____

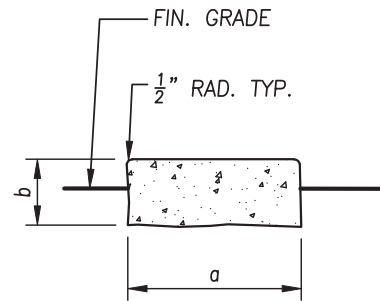
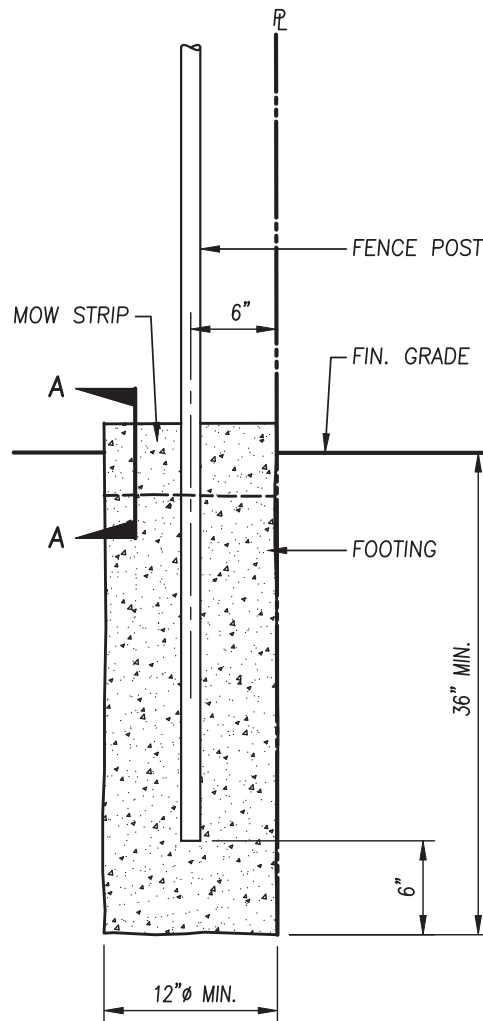
Date: 1/1/16

City Engineer

DRAWING NO.:

9110

1 OF 1



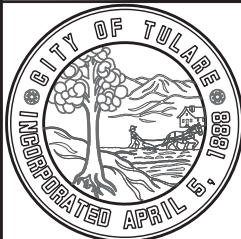
SECTION A-A
MOW STRIP DETAIL

MOW STRIP DIMENSIONS (INCHES)

LOCATION	a	b
ROLLING GATES	24	8
SWING TRAFFIC GATES	12	8
OTHER	12	6

REVISIONS

DATE



CITY OF TULARE
PUBLIC IMPROVEMENT STANDARD

FENCE FOOTING AND MOW STRIP

DRAWING NO.:

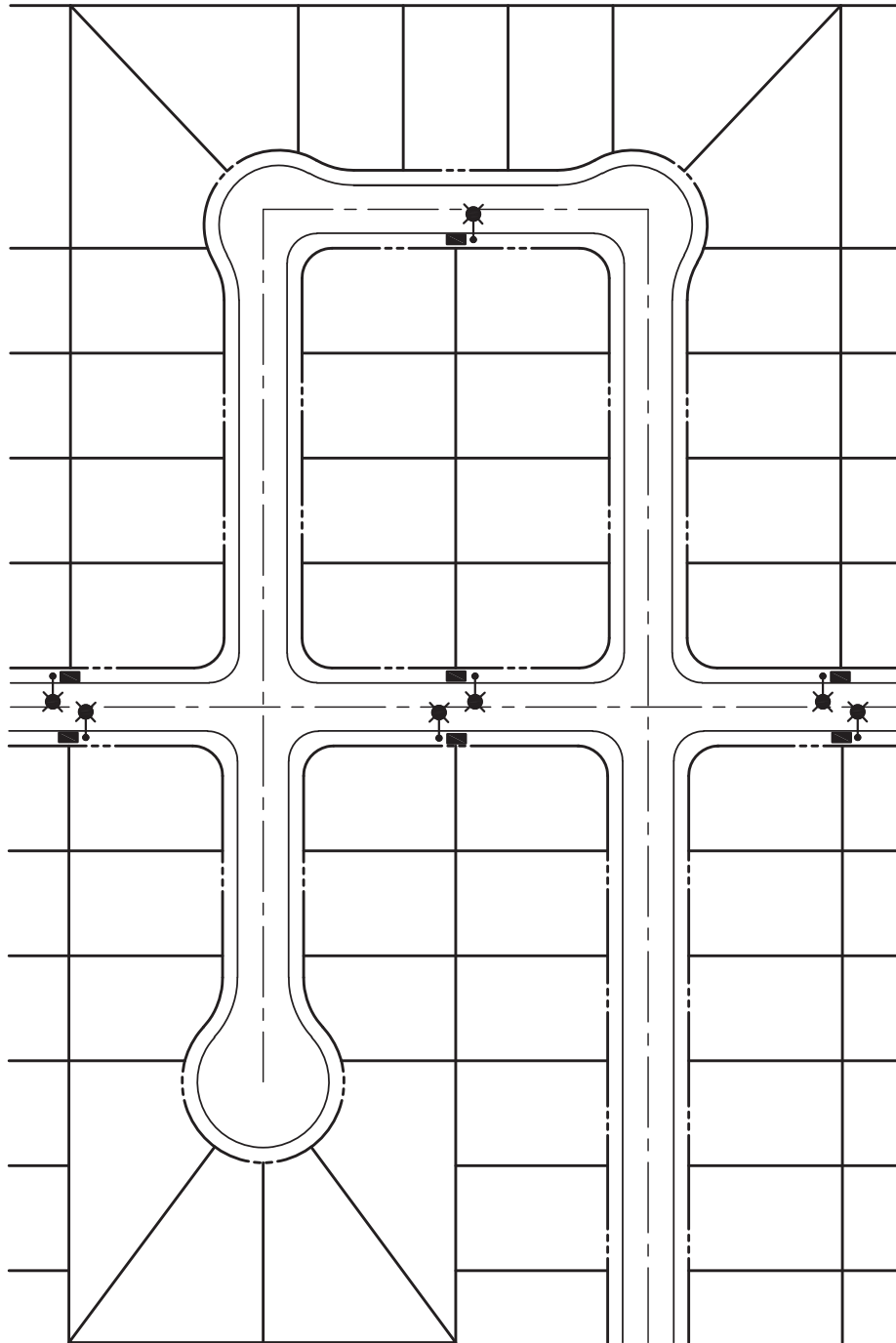
9115

Approved By: _____

Date: 1/1/16

City Engineer

1 OF 1



■ TYPICAL MAILBOX
CLUSTER LOCATION

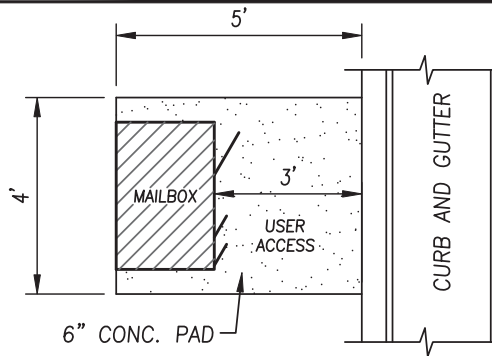
NOTES:

1. MAILBOX CLUSTER LOCATIONS SHALL HAVE A STREET LIGHT LOCATED WITHIN TEN FEET OF THE CLUSTER CONCRETE PAD.
2. ALL MAILBOX CLUSTER LOCATIONS SHALL BE APPROVED BY THE UNITED STATES POSTAL SERVICE PRIOR TO INSTALLATION.

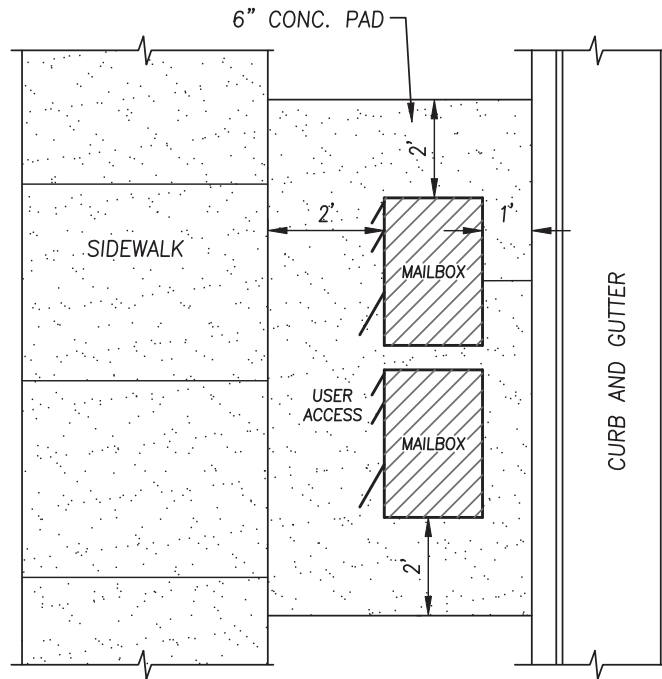
REVISIONS	DATE



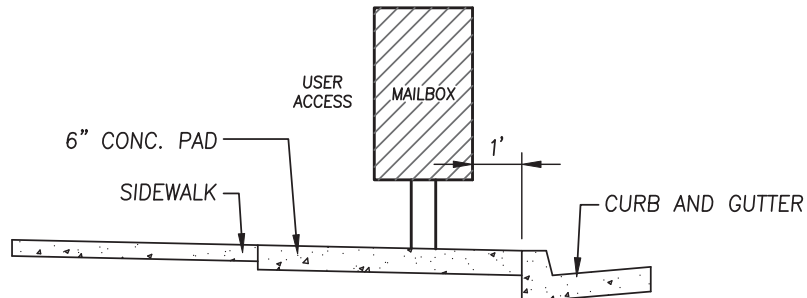
CITY OF TULARE PUBLIC IMPROVEMENT STANDARD MAILBOX CLUSTER LOCATIONS		DRAWING NO.:
Approved By: _____ Date: 1/1/16		9210 1 OF 1
City Engineer		



PLAN – WITHOUT SIDEWALK




PLAN – WITH SIDEWALK

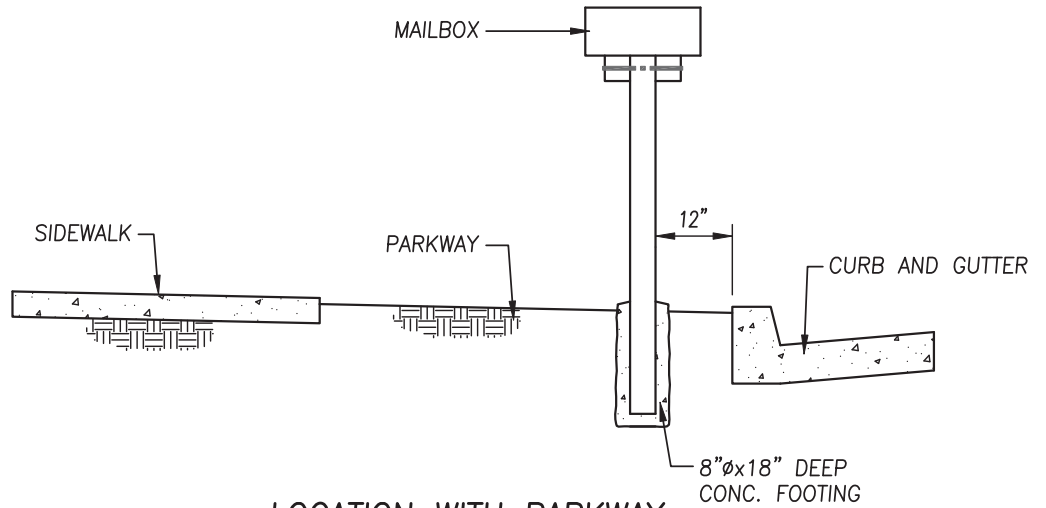


SECTION – WITH SIDEWALK

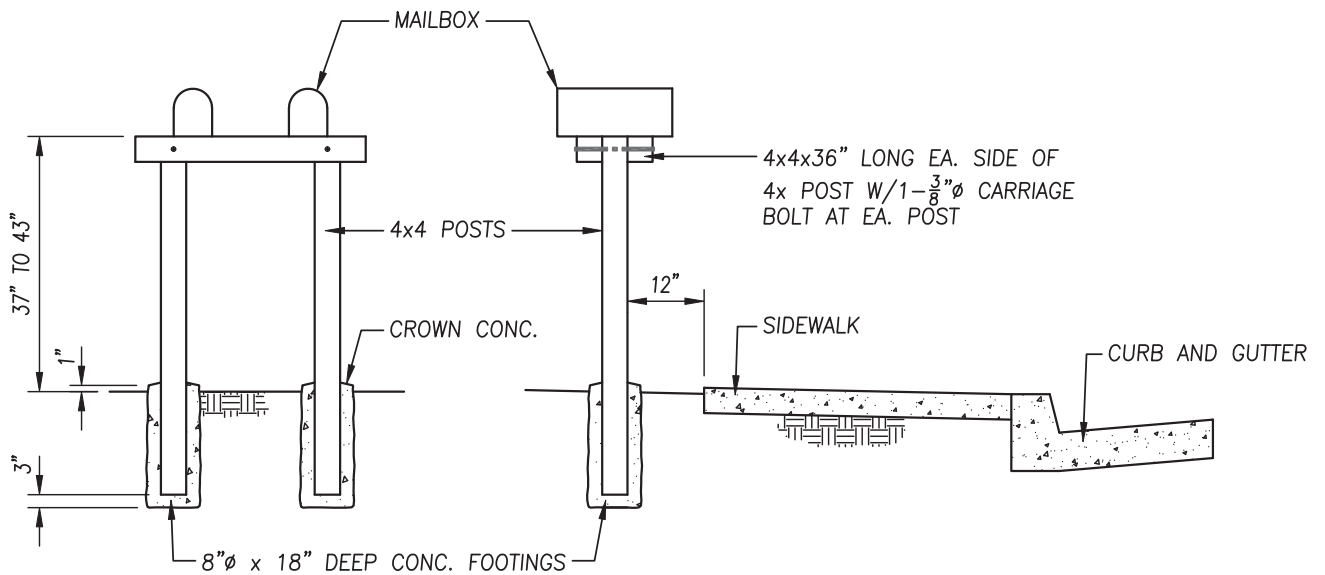
NOTES:

1. ALL MAILBOX CLUSTER DESIGNS SHALL BE APPROVED BY THE UNITED STATES POSTAL SERVICE PRIOR TO INSTALLATION.
2. ALL MAILBOX CONCRETE PADS SHALL HAVE 4"x6" WELDED WIRE MESH REINFORCEMENT.

REVISIONS	DATE		CITY OF TULARE PUBLIC IMPROVEMENT STANDARD	
			MAILBOX CLUSTER DETAIL	
			DRAWING NO.:	
			9215	
			Approved By:	_____ City Engineer
		Date: 1/1/16	1 OF 1	



LOCATION WITH PARKWAY




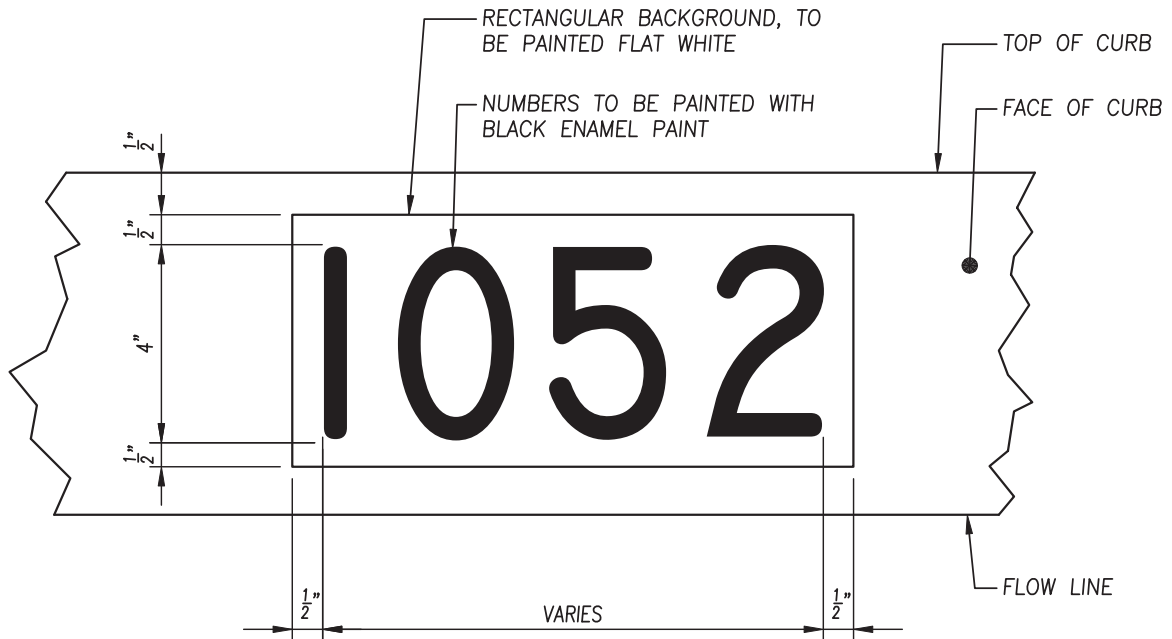
FRONT VIEW

LOCATION WITH ADJACENT SIDEWALK

NOTES:

1. MAILBOXES SHALL BE IN COLLECTIONS OF 2 MINIMUM TO 3 MAXIMUM.
2. MAILBOXES SHALL SERVE HOUSES ON ONE SIDE OF STREET ONLY.
3. HOMEOWNERS SHALL BE RESPONSIBLE FOR ALL MAINTENANCE AND REPAIR.
4. VERTICAL STACKING OF MAILBOXES IS NOT PERMITTED
5. ALL WOOD POSTS SHALL BE NO. 2 PRESSURE TREATED DOUGLAS FIR OR REDWOOD.

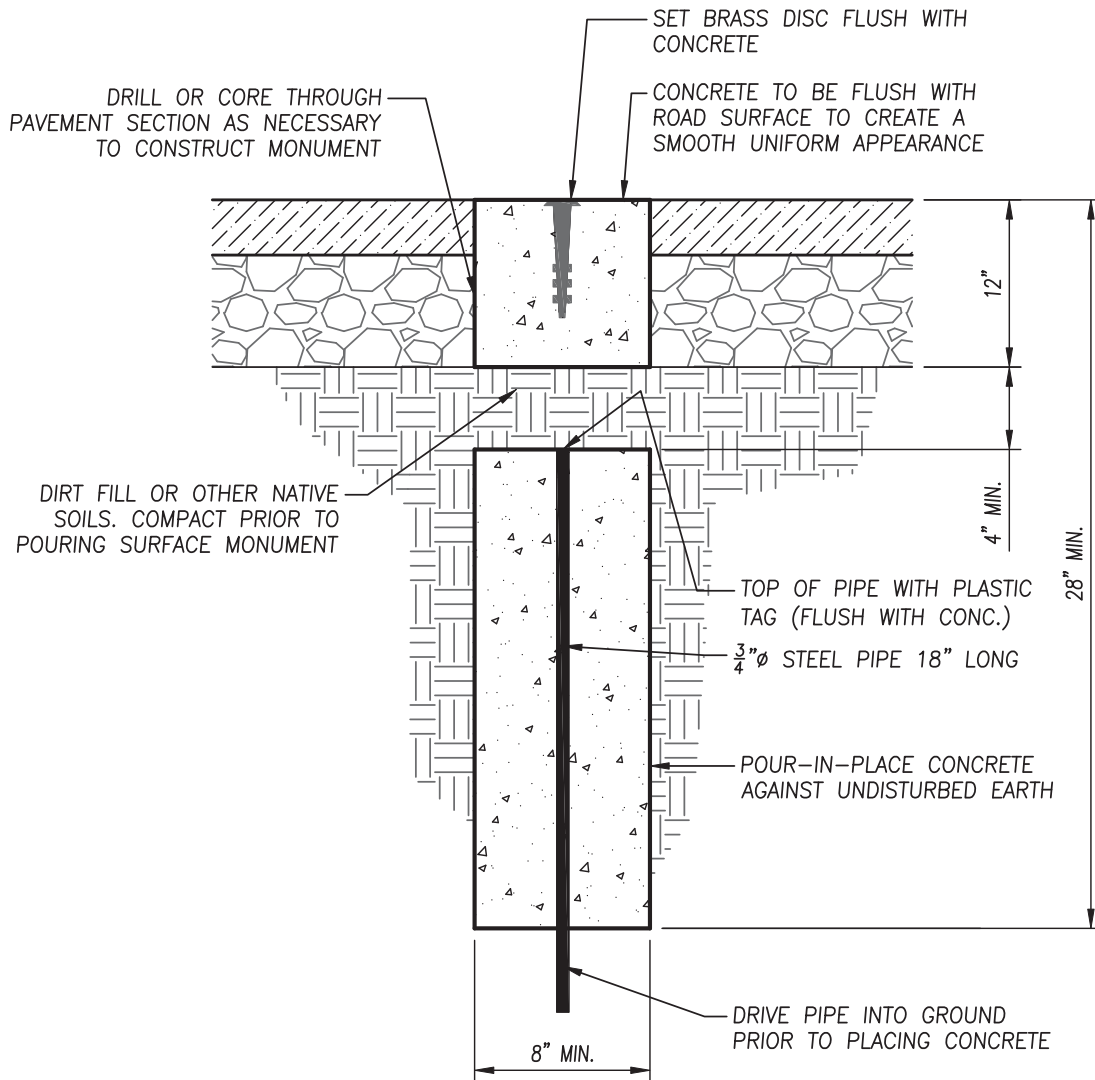
REVISIONS	DATE		CITY OF TULARE PUBLIC IMPROVEMENT STANDARD	
			MAILBOX - INFILL AND REPLACEMENT ONLY	DRAWING NO.:
				9220
			Approved By: _____ Date: 1/1/16	City Engineer
				1 OF 1



NOTES:


1. HOUSE NUMBERS TO BE PAINTED NEAR THE DRIVEWAY APPROACH ON THE SIDE THAT IS CLOSEST TO THE CENTER OF THE LOT. STENCILS MUST BE APPROVED BY THE CITY ENGINEER.
2. REQUIRES NOTARIZED HOLD HARMLESS AGREEMENT FROM APPLICANT AND AN ENCROACHMENT PERMIT FROM THE ENGINEERING DEPARTMENT TO APPLICANT OBTAINING A CITY BUSINESS LICENSE THROUGH CITY FINANCE DEPARTMENT.
3. RESIDENTS CANNOT BE REQUIRED TO PAY FOR THIS SERVICE, EXCEPT BY WRITTEN AGREEMENT WITH THE RESIDENT WHICH IS ENTERED INTO PRIOR TO PAINTING.

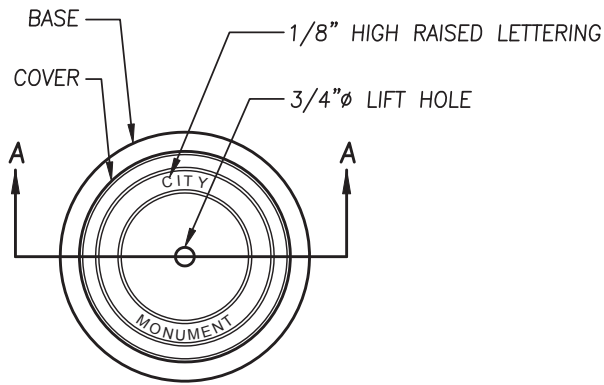
REVISIONS	DATE		CITY OF TULARE PUBLIC IMPROVEMENT STANDARD	
			HOUSE NUMBER ON CURB	DRAWING NO.: <div style="text-align: center; font-size: 1.2em; font-weight: bold;">9225</div>
			Approved By: _____	1 OF 1
			Date: 1/1/16	
			City Engineer	



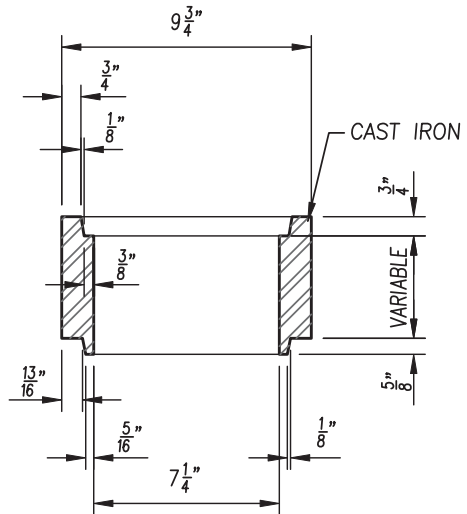
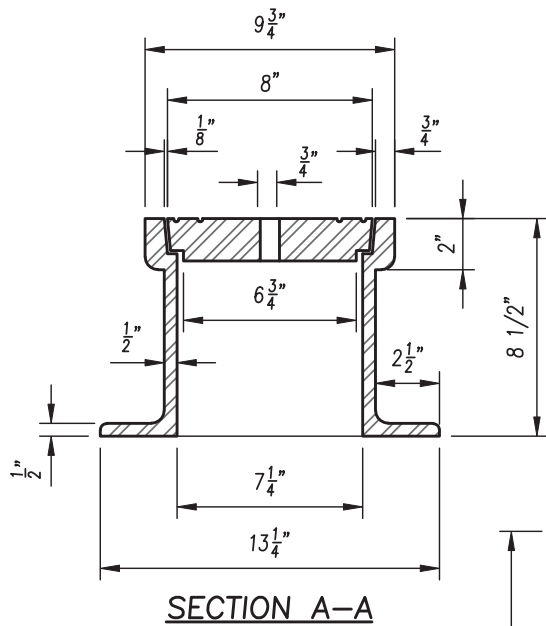
NOTES:

1. SURFACE MONUMENTS SHALL BE PLACED AT LOCATIONS IN THE PUBLIC STREET PER THE DIRECTION OF THE CITY ENGINEER
2. PLASTIC TAG ON REBAR SHALL BE MARKED WITH THE SURVEYOR'S LICENSE NUMBER RESPONSIBLE FOR SETTING THE MONUMENT.
3. MONUMENT SHALL BE 2" DIAMETER FLAT BRASS, WITH CORRUGATED STEM, BY "SURV-KAP" OR EQUAL.
4. THE BRASS DISC SHALL BE STAMPED WITH THE SURVEYOR'S LICENSE NUMBER, WHO IS RESPONSIBLE FOR SETTING THE MONUMENT.
5. BRASS DISC SHALL BE CENTER-PUNCHED BY SURVEYOR UPON COMPLETION OF MONUMENT CONSTRUCTION.

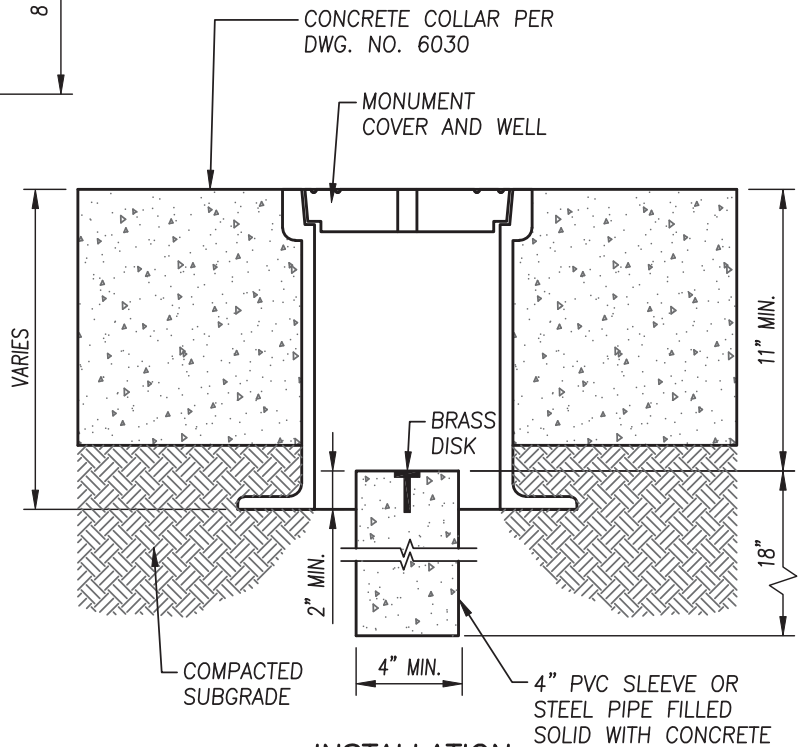
REVISIONS	DATE		CITY OF TULARE PUBLIC IMPROVEMENT STANDARD	
			SURFACE SURVEY MARKER	
			DRAWING NO.:	
			9310	
			Approved By: _____ Date: 1/1/16 City Engineer	
			1 OF 1	



**CAST IRON BASE
& COVER**



**EXTENSION RING
SECTION**

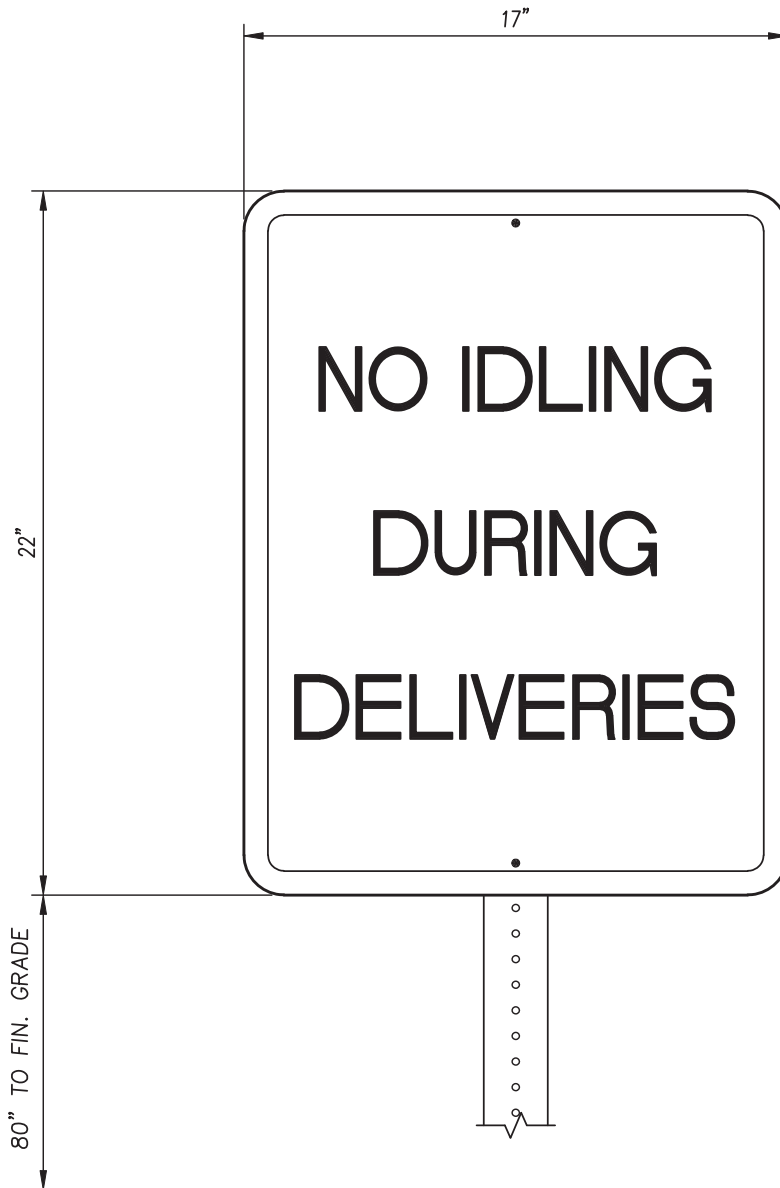


**INSTALLATION
METHOD**

NOTES:


1. BASES, COVERS, & EXTENSIONS TO BE ATLAS FOUNDRY & MFG. CO., RICHMOND, CA.; PINKERTON FOUNDRY, LODI, CA.; OR EQUAL
2. MONUMENT WELLS SHALL BE USED AT SECTION CORNERS, AS DIRECTED BY THE CITY ENGINEER.
3. SEE DWG. NO. 9310 FOR BRASS DISC INFORMATION.

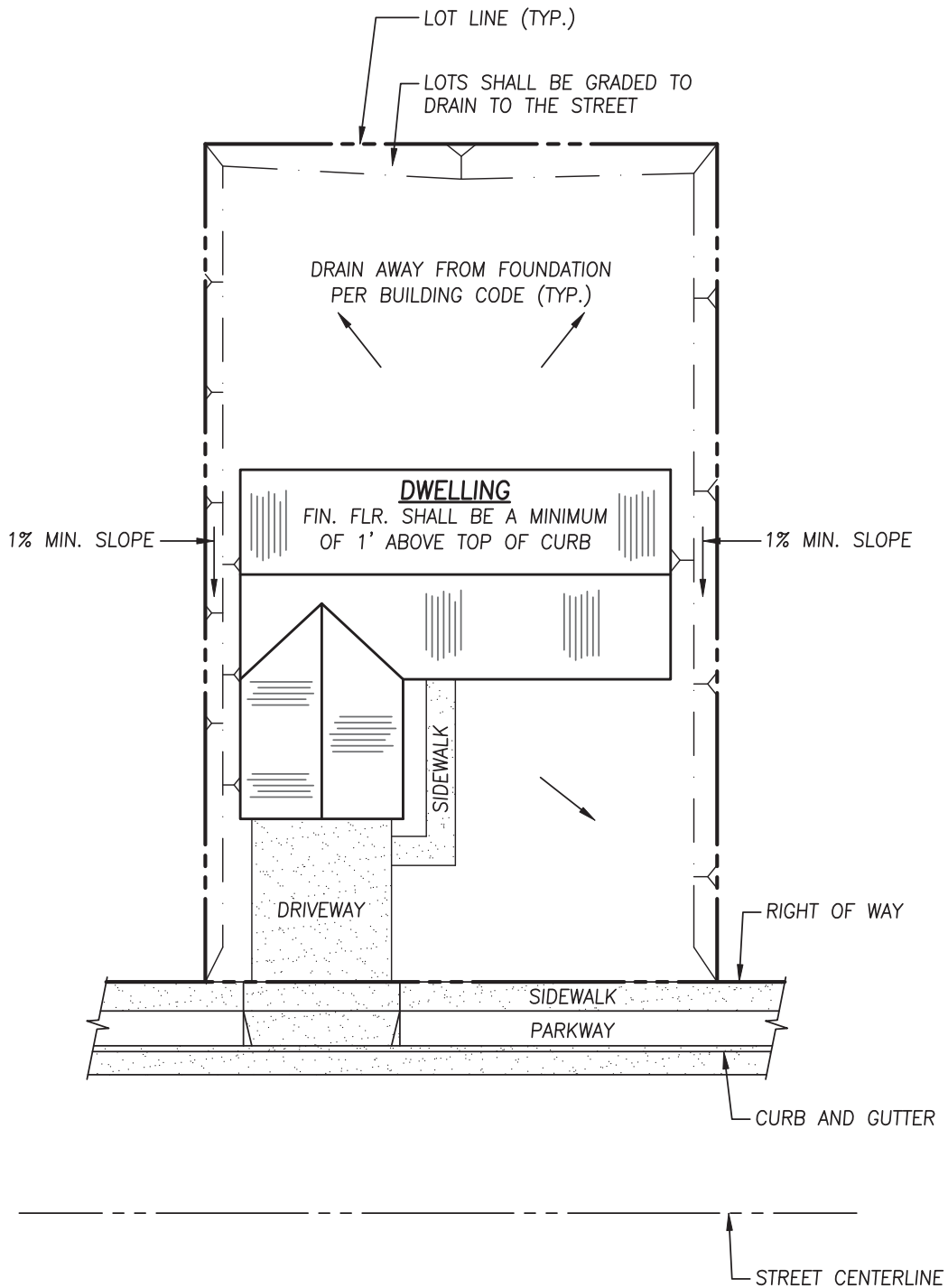
REVISIONS	DATE		CITY OF TULARE PUBLIC IMPROVEMENT STANDARD	
			SURVEY MONUMENT & WELL	
			DRAWING NO.:	
			9311	
			Approved By: _____	City Engineer



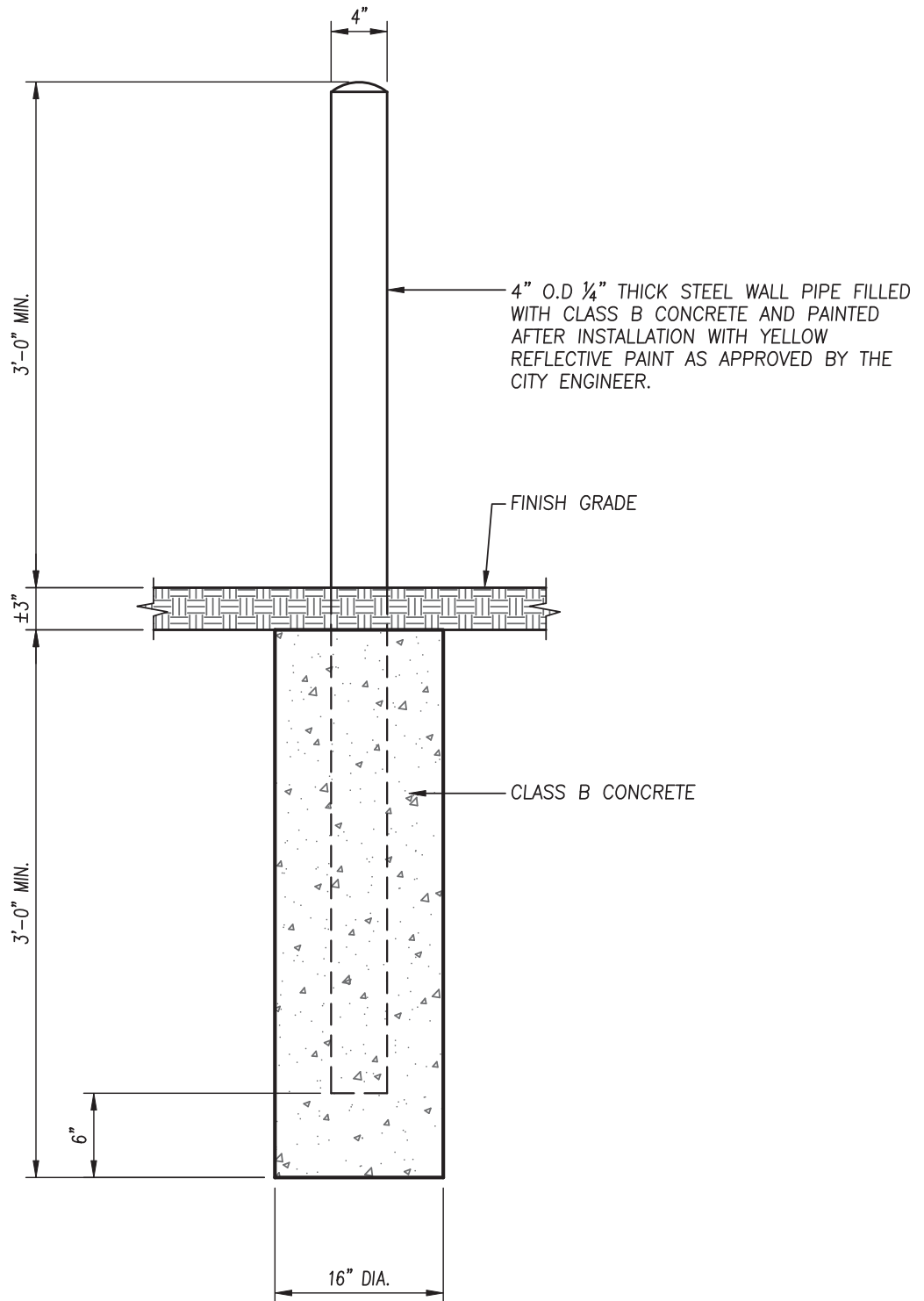
NOTES:

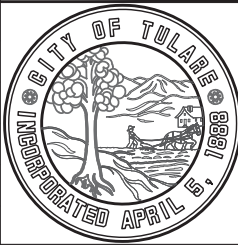
1. SIGN SHALL BE PROMINENTLY POSTED AT LOCATION WHERE DELIVERIES ARE RECEIVED.
2. SIGN SHALL HAVE BLACK LETTERING ON A WHITE BACKGROUND.
3. WORDING SHALL BE SIZED TO FIT SIGN.
4. MOUNT SIGN ON BUILDING OR ON POST SIMILAR TO CITY STANDARD DETAIL 7225.

REVISIONS	DATE		CITY OF TULARE PUBLIC IMPROVEMENT STANDARD	
			TRUCK DELIVERY SIGNAGE	DRAWING NO.: 9410
		Approved By: _____ Date: 1/1/16	City Engineer 1 OF 1	



REVISIONS	DATE		CITY OF TULARE PUBLIC IMPROVEMENT STANDARD		
			TYPICAL RESIDENTIAL LOT DRAINAGE	DRAWING NO.:	
			Approved By: _____	9510	
			Date: 1/1/16	City Engineer	
				1 OF 1	



REVISIONS	DATE	 <p style="text-align: center;">CITY OF TULARE PUBLIC IMPROVEMENT STANDARD</p>												
<table border="1" style="width: 100%; height: 100%;"> <tr><td> </td></tr> <tr><td> </td></tr> <tr><td> </td></tr> <tr><td> </td></tr> <tr><td> </td></tr> </table>								<table border="1" style="width: 100%; height: 100%;"> <tr><td> </td></tr> <tr><td> </td></tr> <tr><td> </td></tr> <tr><td> </td></tr> <tr><td> </td></tr> </table>						<p style="text-align: center;">PIPE BOLLARD</p> <p>Approved By: _____ Date: 1/1/16 City Engineer</p>