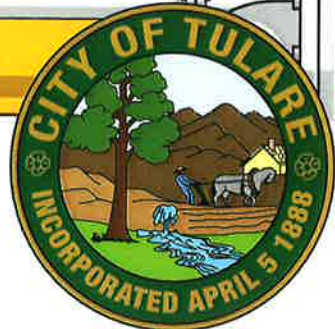


"CLEAN PIPES ARE HEALTHY PIPES"

STOP! THE FOG



FAT OIL GREASE IN YOUR PIPES

The FOG Mob is **FAT**, **OIL** and **GREASE** and it comes from everyday food preparation and cooking items like:

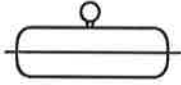


CHEESE

OIL BASED
SALAD DRESSING

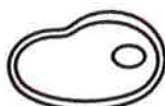


- COOKING OIL
- VEGETABLE OIL

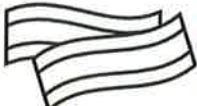


BUTTER

- LARD
- SHORTENING



COOKED MEAT



- BACON
- SAUSAGE



"SKIM" FROM POULTRY
Such as chicken, gravy, mayonnaise & peanut butter

How Does FOG Clog My Sewer Line?

When heated, FOG looks like any other liquid, so pouring a little down the drain may not be seen like a big deal. But as FOG cools, it solidifies and over time will slowly build up causing a blockage in your sewer line. FOG kind of looks like a long clump of soap.

FOG Costs You Money

A clogged sewer line at your house, business or property could cost you hundreds to thousands of dollars to service, repair or replace. PREVENTION CAN SAVE MONEY!

FOG PREVENTION CHECKLIST



Use natural enzymes (Septic Shock, Zep Drain Care, Enforcer Drain Care, Rid-X Liquid) weekly to maintain a clean sewer line.



Remove all trees or shrubs within ten (10) feet of your sewer line.



Pour liquid food scraps, e.g. sauces, milkshakes, etc. into a container and place into trash can.



Pour used warm (not hot) oil and grease into a container with a top, so it can be reused, recycled or disposed of in the trash.



Use mesh drain strainers to catch solid food scraps for disposal in a trash can.



If possible use warm water (under 140°) to wash dishes.

SEWER LATERAL (LINE) BLOCKED?

• IMPORTANT - DO NOT remove the sewer cleanout cap and allow waste to flow freely •

At the first sign of a serious plumbing blockage Pour Drano, Liquid-Plumber or ZEP down the drain. Contact a professional plumber or rent a mechanical drain cleaner (snake) if chemicals are unable to clear the blockage.

NOTE: Your sewer lateral (line) runs from your house to the City's sewer main and is your responsibility to maintain.

For Information call Public Works at 684-4324