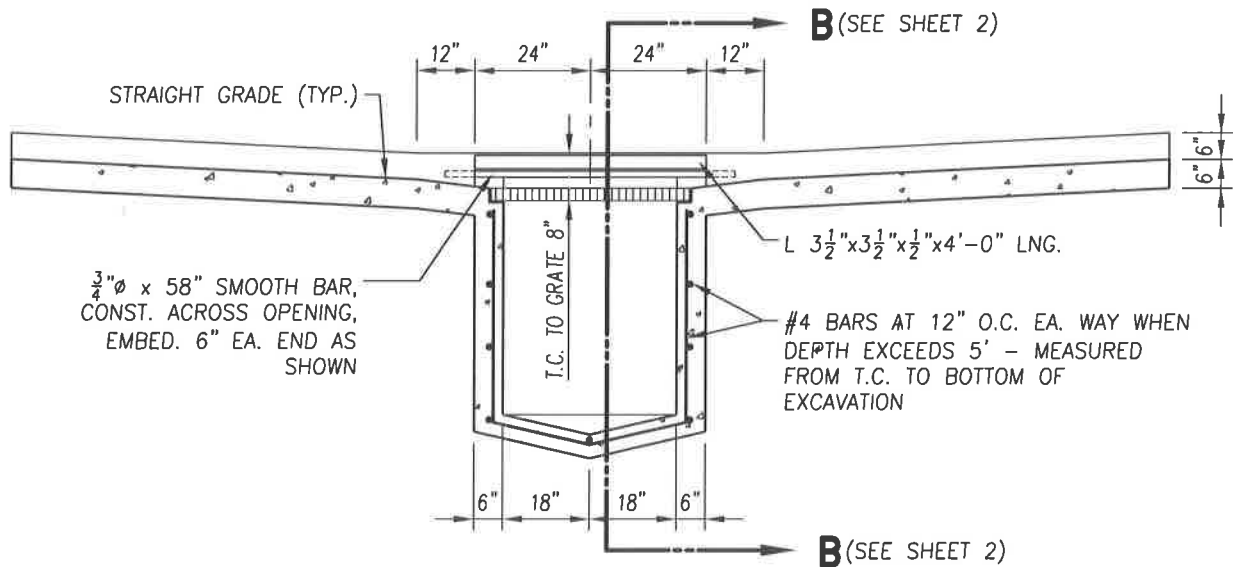


PLAN

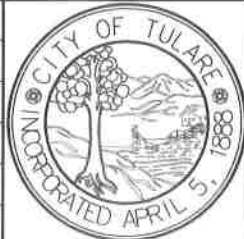


SECTION A-A

NOTES:

1. ALL METALS USED EXCEPT CASTINGS AND REINFORCING STEEL SHALL BE STRUCTURAL GRADE STEEL OR BETTER, AND SHALL BE HOT-DIPPED GALVANIZED AFTER FABRICATION. AFTER INSTALLATION, ALL ABRADED SURFACES SHALL BE NEATLY SOLDERED OVER WITH 50-50 SOLDER.
2. CLASS "2" CONCRETE SHALL BE USED FOR ALL STRUCTURES.
3. MINIMUM CLEAR SPACING BETWEEN SURFACES OF CONCRETE AND REINFORCING STEEL SHALL BE 1 1/2".
4. POSITION OF CONDUIT LEAVING INLET TO BE AS INDICATED ON PLANS AND INLET FLOOR TO SLOPE TOWARD CONDUIT. WHERE TWO OR MORE CONDUITS ENTER AN INLET, THE FLOOR SHALL HAVE CHANNEL CONNECTING THE CONDUITS.
5. FRAME AND GRATE SHALL BE MATCH-MARKED AND FITTED WITHOUT ROCKING.
6. STORM DRAIN MARKER PLACED ON TOP OF CURB SHALL BE BY "BERNTSEN" OR APPROVED EQUIVALENT AND SHALL READ "ONLY RAIN DOWN THE STORM DRAIN". MARKER SHALL BE ADHERED PER THE MFG'S RECOMMENDATIONS.

REVISIONS	DATE



CITY OF TULARE
PUBLIC IMPROVEMENT STANDARD
STORM WATER DROP INLET

DRAWING NO.:

3110

Approved By:

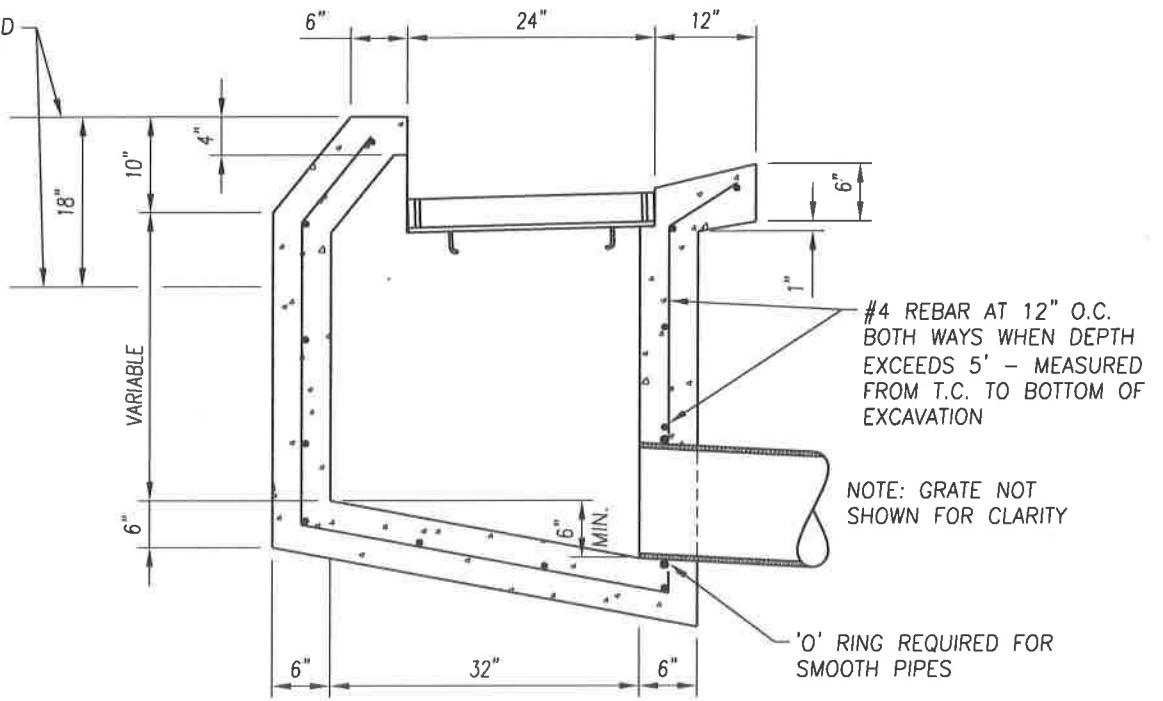
Michael W. Miller

Date: 11/15/16

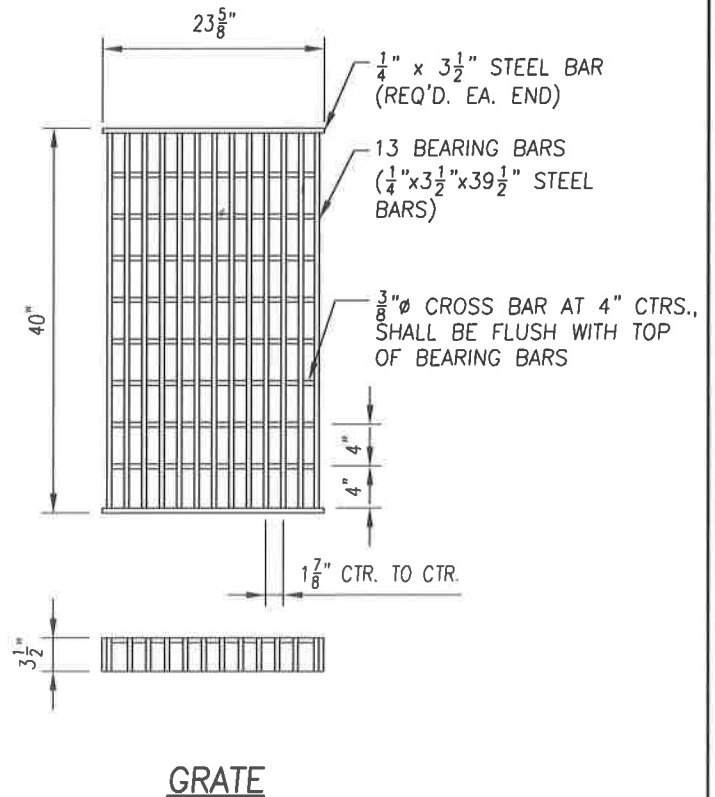
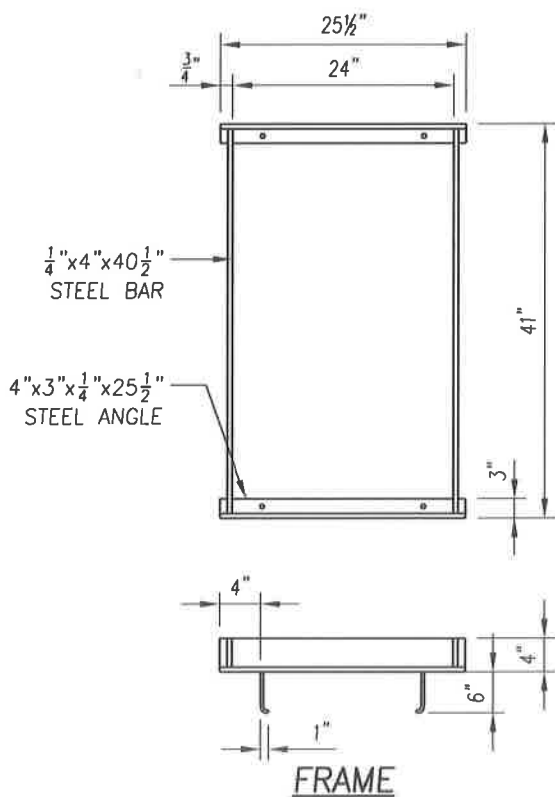
City Engineer

1 OF 2

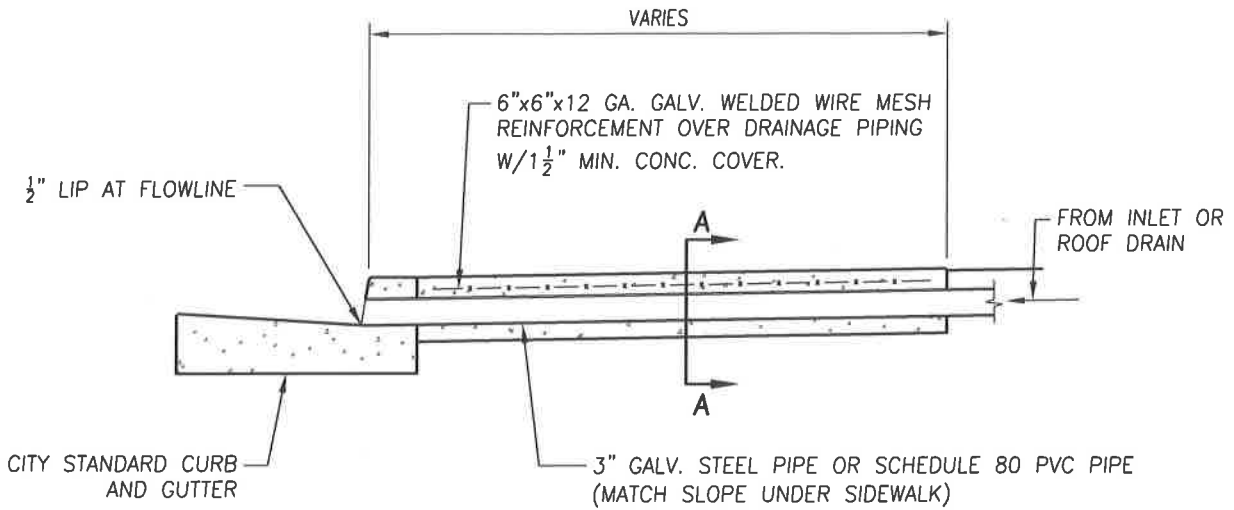
REBAR TO BE INSTALLED REGARDLESS OF DEPTH OF INLET



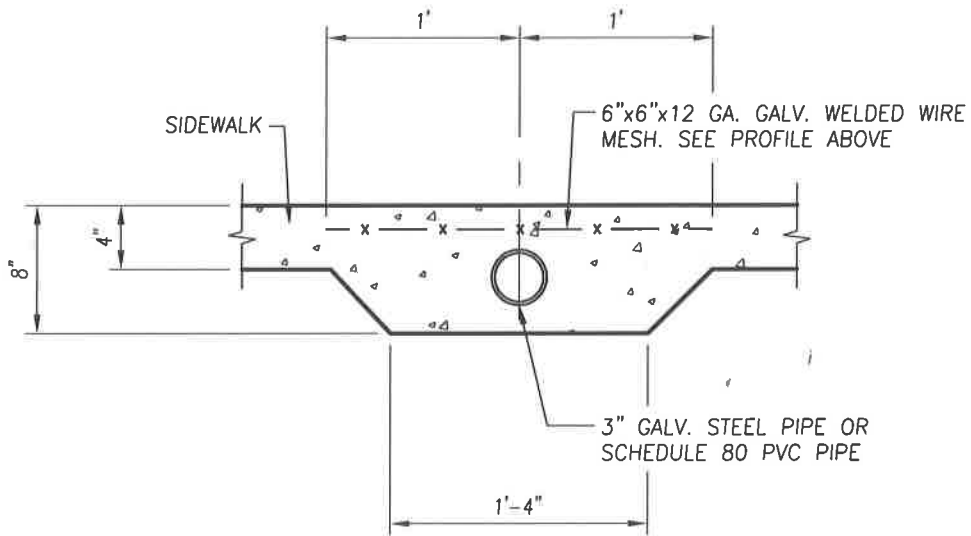
SECTION B-B




REVISIONS	DATE		CITY OF TULARE PUBLIC IMPROVEMENT STANDARD	
			STORM WATER DROP INLET	DRAWING NO.:
			Approved By:	<i>Michael W. Miller</i>
			Date: 11/15/16	City Engineer
				2 OF 2

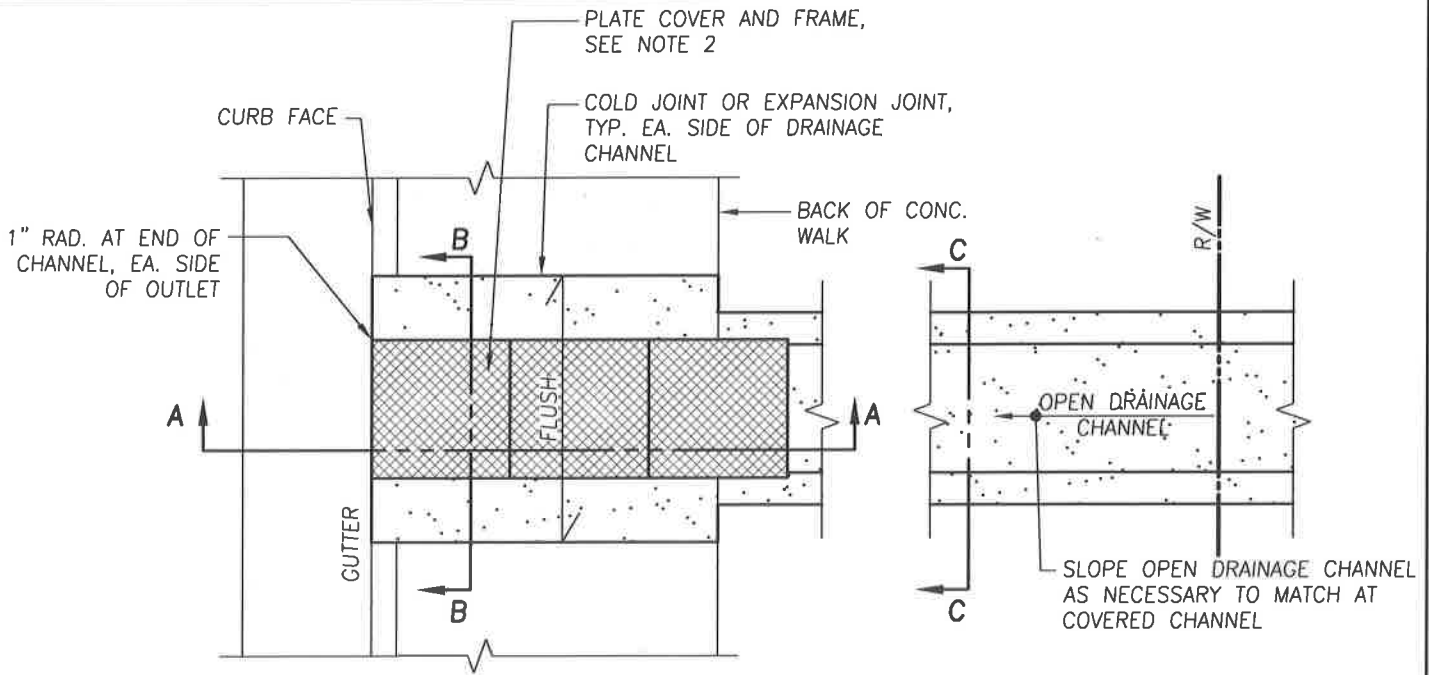


PROFILE VIEW

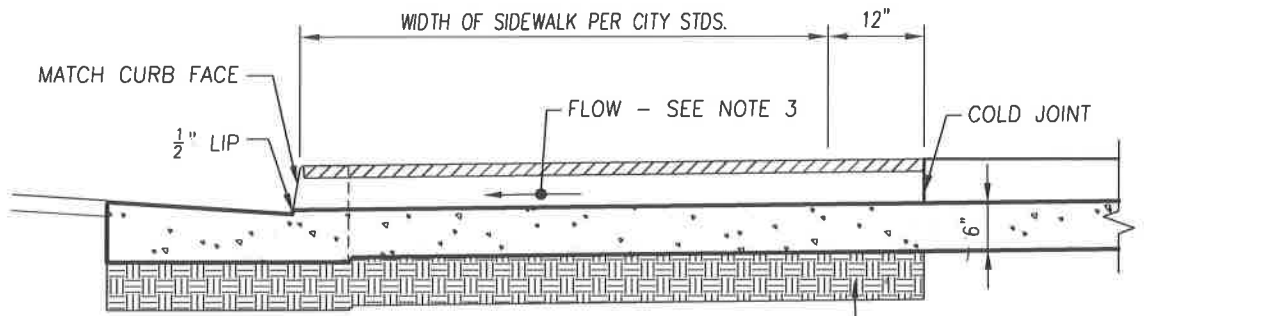


SECTION A-A

REVISIONS	DATE		CITY OF TULARE PUBLIC IMPROVEMENT STANDARD	
			EMBEDDED DRAINAGE PIPING UNDER SIDEWALK	DRAWING NO.:
			Approved By: <i>Michael W. Miller</i>	3210
			Date: 11/15/16	City Engineer
				1 OF 1



PLAN VIEW



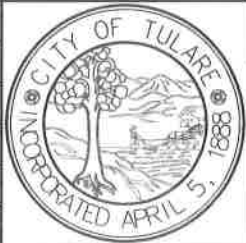
SECTION A-A

CHANNELS SHALL BE PLACED ON COMPACTED SUBGRADE MATERIALS (95% RELATIVE COMPACTION).

NOTES:

1. SEE SHEET 2 OF 2 FOR ADDITIONAL INFORMATION.
2. FRAME AND COVERS SHALL BE "NEENAH" R-4999, TYPE D, SOLID TOP BOLTED WITH PERMA-GRIP SURFACE OR APPROVED EQUAL. THERE SHALL BE A 1/8" SPACE BETWEEN THE FRAME AND THE LID. INSTALL FRAME AND COVERS IN ACCORDANCE WITH MANUFACTURER'S RECOMMENDATIONS WITH THE EXCEPTION OF REBAR. THE ONLY REBAR REQUIRED FOR THIS INSTALLATION ARE THE #3 FRAME ANCHOR TIE BARS. SIDEWALK, FRAME AND COVER SHALL BE FLUSH WHEN COMPLETE.
3. COVERED CHANNEL SLOPE SHALL BE NO LESS THAN 1.0% AND NO MORE THAN 2.0% AND SHALL BE PARALLEL WITH SIDEWALK SURFACE CROSS SLOPE.
4. ROUND ALL EXPOSED CONCRETE CORNERS WITH 1/2" RADIUS TYPICAL.
5. HEIGHT VARIES TO MATCH UP WITH COVERED SIDEWALK UNDERDRAIN CHANNEL AND PROVIDE POSITIVE FLOW TO STREET.
6. ALL CONCRETE SHALL BE CLASS 2. ALL CONCRETE WORK SHALL HAVE A LIGHT BROOM FINISH. WEAKENED PLANE JOINTS SHALL BE CONSTRUCTED AT 16' CTR'S. AND SHALL BE FINISHED WITH A SCORING TOOL LEAVING EDGES ROUNDED.

REVISIONS	DATE



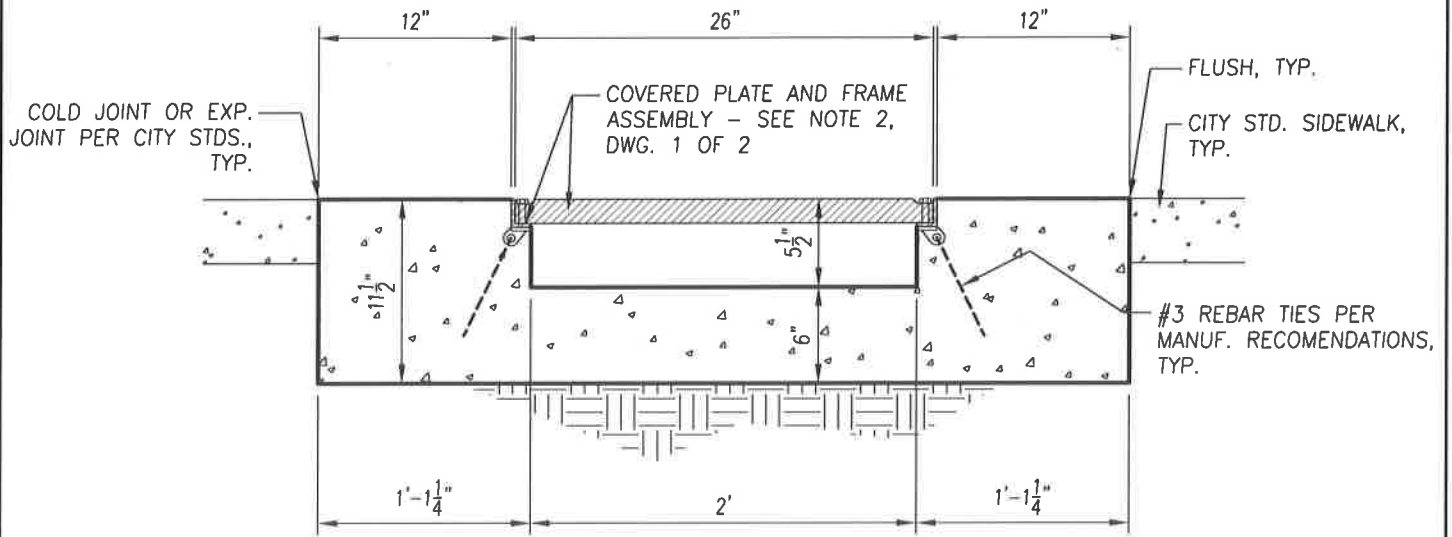
CITY OF TULARE
PUBLIC IMPROVEMENT STANDARD

SIDEWALK UNDERDRAIN WITH COVER PLATES

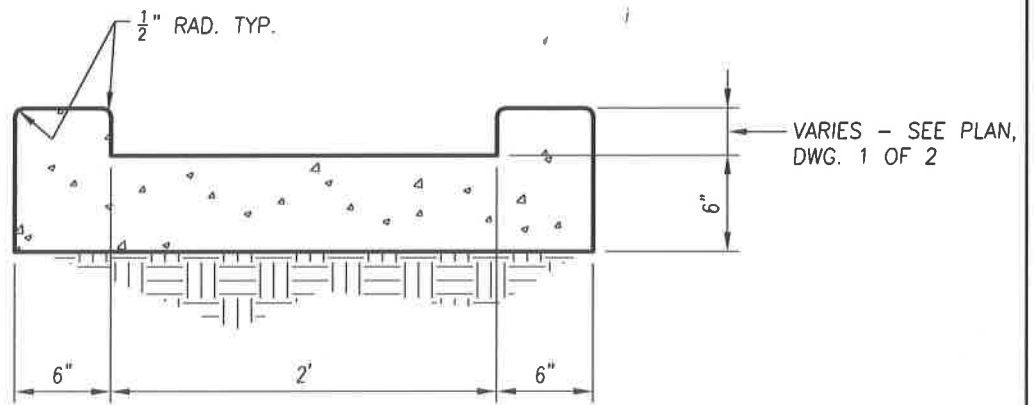
DRAWING NO.:
3215

Approved By: *Michael W. Miller*
Date: 11/15/16 City Engineer

1 OF 2

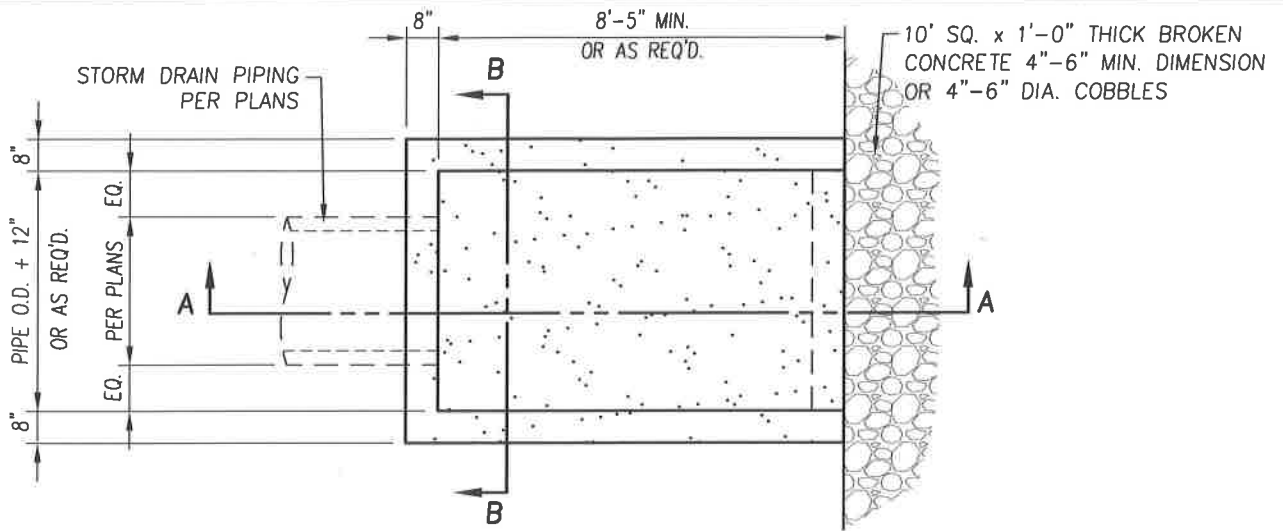


SECTION B-B

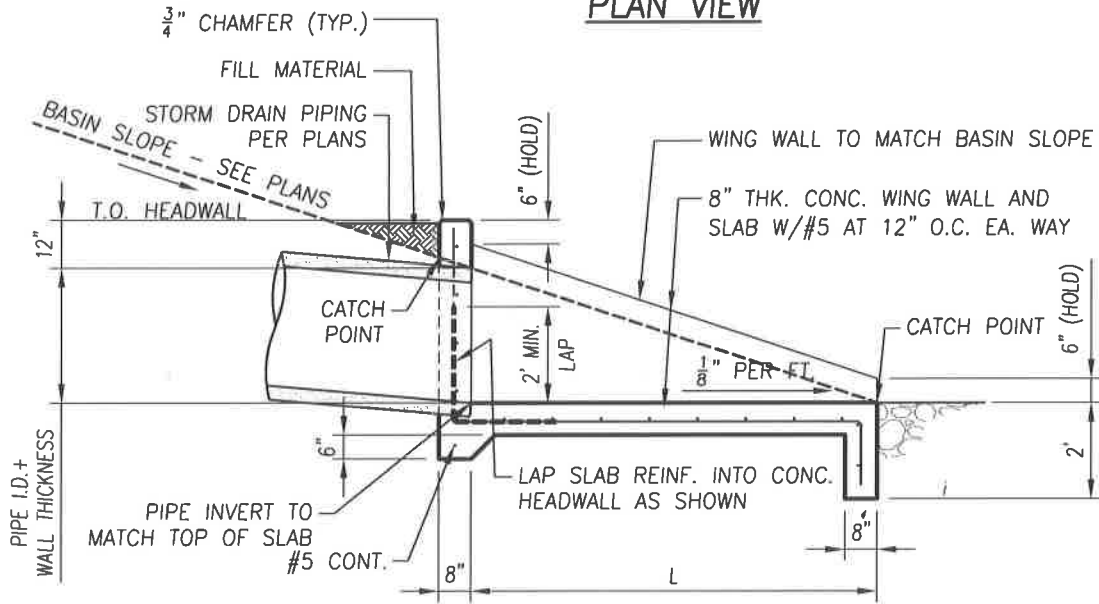


SECTION C-C

REVISIONS	DATE		CITY OF TULARE PUBLIC IMPROVEMENT STANDARD	
			SIDEWALK UNDERDRAIN WITH COVER PLATES	DRAWING NO.:
				3215
			Approved By: _____	
			Date: 11/15/16	City Engineer

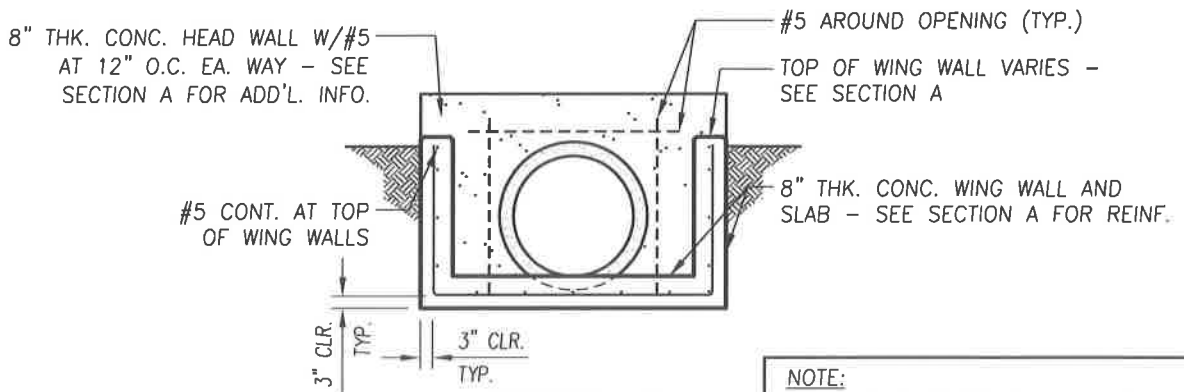


PLAN VIEW



$$L = [\text{PIPE I.D.} + \text{PIPE WALL THICKNESS}] \times [\text{BASIN SLOPE (H:V)}]$$

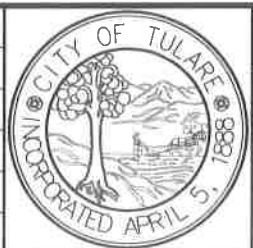
SECTION A



SECTION B

NOTE:
GRATE NOT SHOWN FOR CLARITY - SEE
DRAWING NO. 3310, SHEET 2 OF 2

REVISIONS	DATE



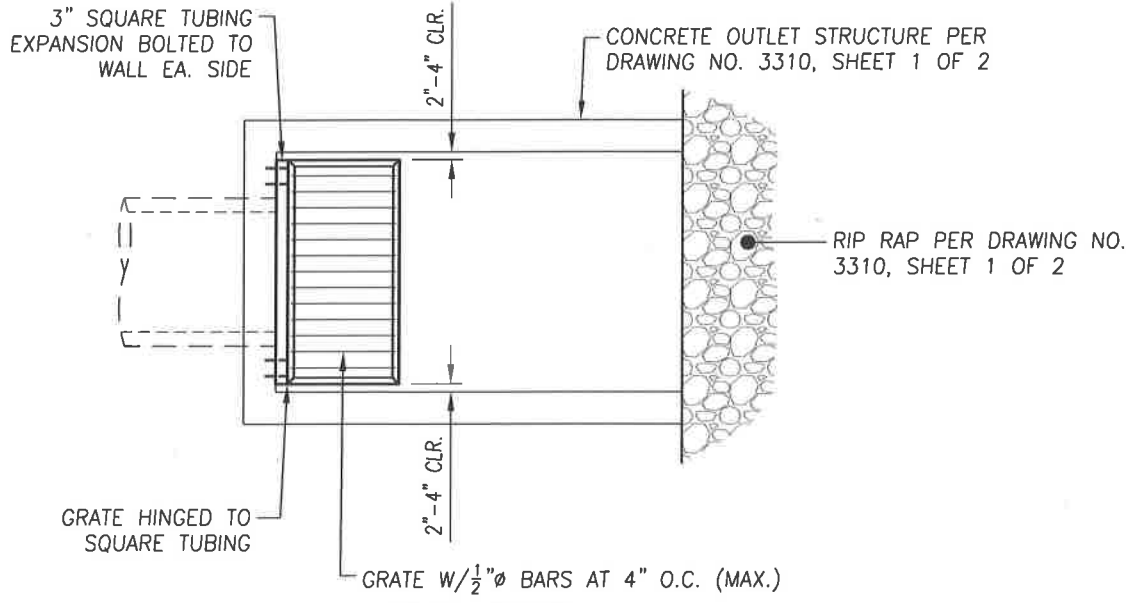
CITY OF TULARE
PUBLIC IMPROVEMENT STANDARD

**CAST-IN-PLACE
OUTLET STRUCTURE**

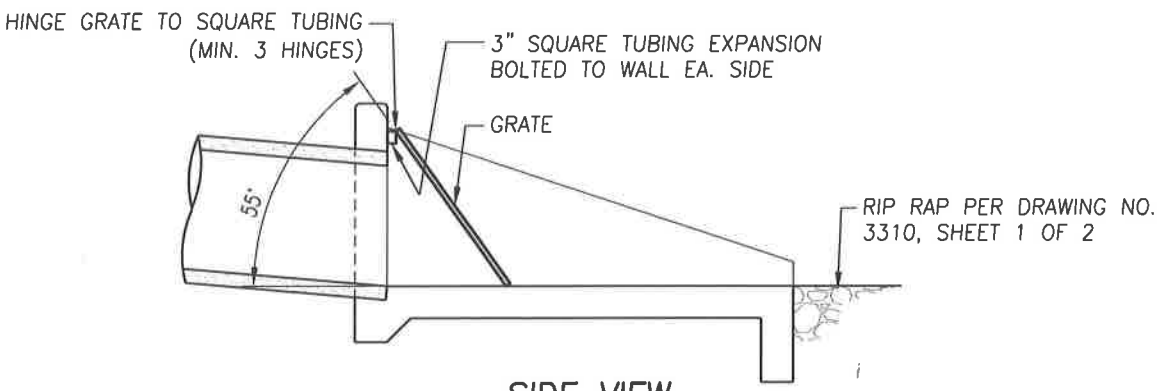
DRAWING NO.:
3310

Approved By: Michael W. Miller
Date: 11/15/16 City Engineer

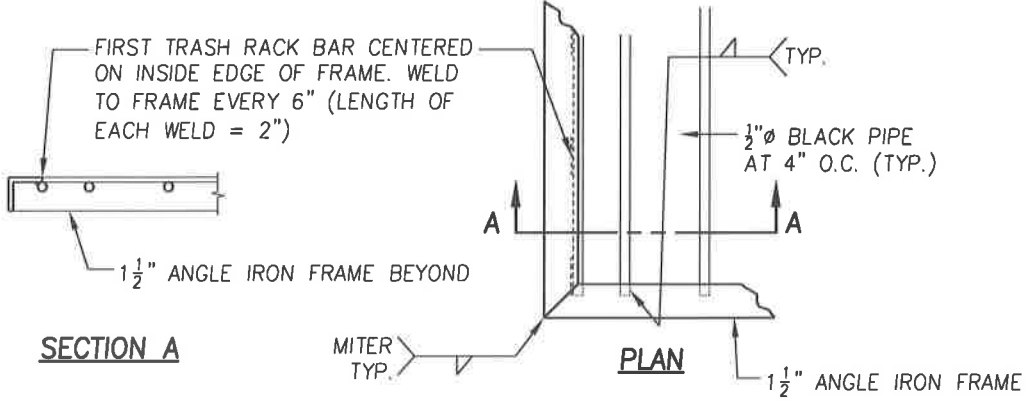
1 OF 2



PLAN VIEW



SIDE VIEW



GRATE CONSTRUCTION

NOTE:
 PAINT GRATE WITH (3) COATS OF INDUSTRIAL STRENGTH BLACK PAINT. GRATE SHALL BE CLEAN AND FREE OF RUST PRIOR TO PAINT APPLICATION.

REVISIONS	DATE



CITY OF TULARE
 PUBLIC IMPROVEMENT STANDARD

**CAST-IN-PLACE
 OUTLET STRUCTURE**

DRAWING NO.:
3310

Approved By: Michael W. Miller
 Date: 11/15/16 City Engineer

2 OF 2